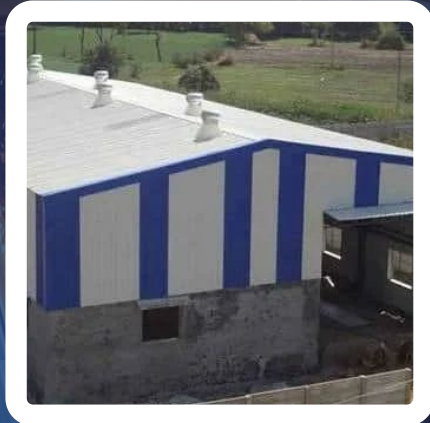
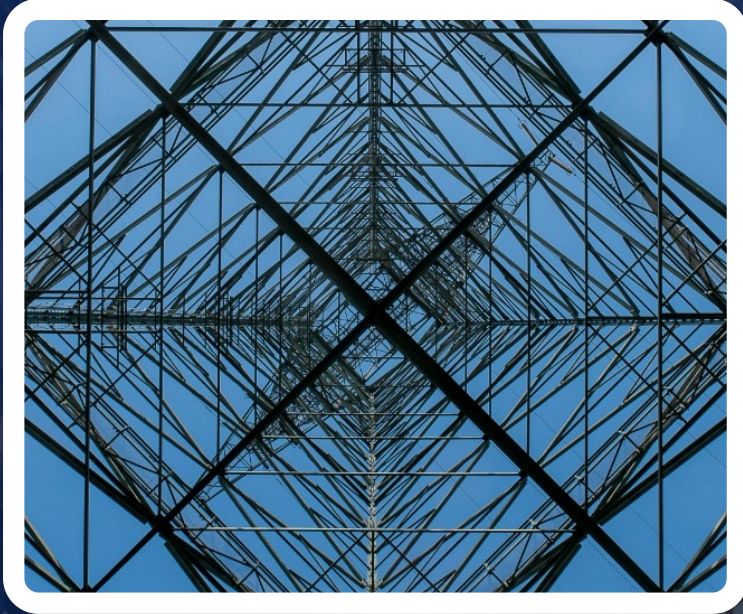




Structural Strength
Perfect Angles. Reliable Channels.



Connect with us:

Shree Ambica Alloys, RG Mill Road, Sirhind Side, Mandi

Gobindgarh, Punjab 147301

Ph. +91 9815689595, 01765 511095, 01765 515915

Email: sales@sgmart.co.in

Website : sgmart.co.in

www.aplapollosgmt.com



**Introducing APL Apollo SG Angle & Channel
built for strength, made for stability.**

APL Apollo SG Angle & Channel sections are designed to deliver reliable structural performance for today's construction and fabrication needs. Available in multiple sizes, these products ensure flexibility for a wide range of applications.

From residential projects to commercial structures and industrial frameworks, APL Apollo SG Angle & Channel sections provide durable support with consistent quality and long-term strength. With excellent load-bearing capacity, dimensional accuracy, and trusted durability, APL Apollo SG Angle & Channel are the smart choice for strong and efficient construction.

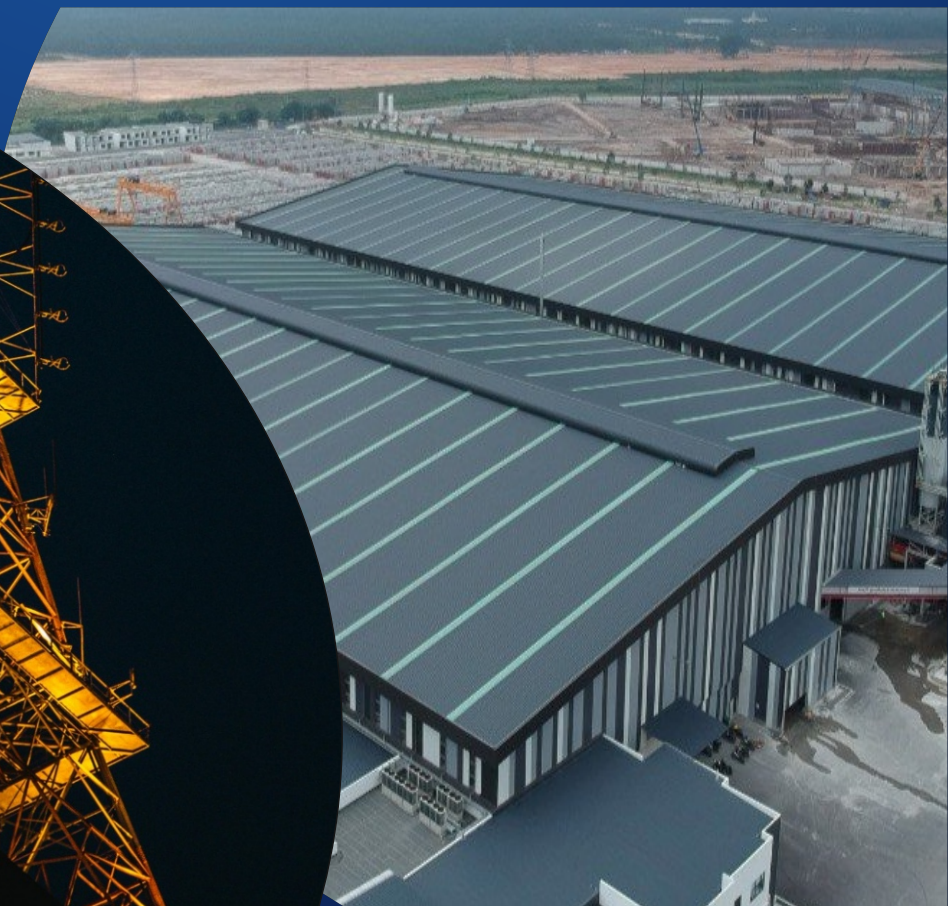
ABOUT US

APL Apollo SG, a division of SG Mart Limited, is a trusted supplier of high-quality MS Angles and Channels designed to meet the demanding needs of modern construction and fabrication.

Backed by the strength and manufacturing excellence of APL Apollo, we focus on delivering structural steel sections that offer consistent quality, dimensional accuracy, and reliable load-bearing performance. Our Angles and Channels are widely used in industrial sheds, commercial buildings, infrastructure projects, frames, racks, and support structures where strength and stability are critical.

At APL Apollo SG, we understand that structural components form the foundation of every project. That's why we emphasize precision, durability, and ease of fabrication, ensuring our products support efficient construction while maintaining long-term structural integrity.

With a customer-first approach, robust supply capabilities, and a commitment to quality standards, APL Apollo SG (SG Mart Limited) continues to support builders, fabricators, and project partners with dependable Angle and Channel solutions that help build stronger, safer, and more efficient structures.



UNIQUE ADVANTAGE



Versatile applications

Used in shed, frames, racks & supports



Less maintenance

Long life with minimal upkeep



Reliable durability

Strong performance in harsh conditions



Strong edge support

Excellent support for frames & joints



Easy fabrication

Easy cutting, drilling, welding & bending



Easy installation

Quick fitting & bolting on-site



Dimensional stability

Uniform shape for accurate fitting



Cost-effective structure

Budget friendly & widely available

VISION

To become a trusted name in structural steel solutions by delivering high-strength Angle and Channel products that form the backbone of safe, stable, and long-lasting construction across India.

MISSION

Our mission is to supply precision-engineered MS Angles and Channels that offer superior load-bearing capacity, dimensional accuracy, and durability. We are committed to supporting infrastructure, industrial, and commercial projects with consistent quality, reliable availability, and products that simplify fabrication while strengthening structural performance.



ANGLES

WIDTH (IN MM)	THICKNESS (IN MM)
➤ 25	3,5
➤ 32	3
➤ 35	4,5
➤ 40	3,4,5,6
➤ 45	4,5,6
➤ 50	3,4,5,6&8
➤ 60	4,5
➤ 65	5,6,8,10
➤ 70	4,5
➤ 75	5,6,8,10
➤ 80	6,8,10,12
➤ 90	4,5,6,8,10
➤ 100	6,8,10,12



Weight in KG Per Meter(MS ANGLE)

Size in mm	Weight (KG/M)	Size in mm	Weight (KG/M)
20x20x3	0.86	80x80x8	9.6
25x25x3	1.12	80x80x10	11.8
25x25x4	1.46	80x80x12	14
25x25x5	1.77	90x90x6	8.2
25x25x6	1.8	90x90x8	11
30x30x3	1.36	90x90x10	13.5
30x30x4	1.78	90x90x12	15.8
30x30x5	2.18	100x100x6	9.2
35x35x4	2.1	100x100x8	12.3
35x35x5	2.57	100x100x10	15.1
35x35x6	3.04	100x100x12	17.9
40x40x3	1.83	110x110x8	13.4
40x40x4	2.42	110x110x11	16.5
40x40x5	2.97	110x110x12	19.6
40x40x6	3.52	110x110x16	24.2
45x45x4	2.73	120x120x8	14.7
45x45x5	3.38	120x120x10	18.3
45x45x6	3.96	120x120x12	21.7
50x50x4	3.06	120x120x16	26.6
50x50x6	4.47	130x130x8	15.9
50x50x8	5.78	130x130x10	19.7
60x60x5	4.6	130x130x12	23.4
60x60x6	5.42	130x130x16	28.9
60x60x8	7.09	150x150x10	23.6
65x65x5	4.93	150x150x12	27.4
65x65x6	5.93	150x150x14	31.7
65x65x8	7.75	150x150x16	36
65x65x10	9.4	150x150x18	39.9
75x75x5	5.7	150x150x20	44.3
75x75x6	6.8	200x200x12	36.6
75x75x8	9.03	200x200x16	48.5
75x75x10	11.1	200x200x20	60.1
80x80x6	7.3	200x200x25	73.6

CHANNEL

SIZE	WEIGHT
➤ 75*40	(SL), (L), (H)
➤ 100*50	(SL), (L), (H)
➤ 125*65	(L) & (H)
➤ 150*75	(L) & (H)

6 METER FIX LENGTH SIZES ARE AVAILABLE IN READY STOCK AT EXTRA COST .
OTHER FIX LENGTH SIZES CAN BE MANUFACTURED AT EXTRA COST .



IS: 2062 - Specification of Steel for General Structural Purposes

CHEMICAL COMPOSITION

Grade	C% Max.	Mn% Max.	S% Max.	P% Max.	Si% Max.	C.E.% Max
A	0.23	1.50	0.050	0.050	0.40	0.42
B	0.22	1.50	0.045	0.045	0.40	0.41
C	0.20	1.50	0.040	0.040	0.40	0.39

MECHANICAL PROPERTIES

Grade	UTS (MPa) Min.	Y.S. (MPa) Min.			El.% Min. 5.65 Sqrt(So)	Bend Test
A	410	250	240	230	23	3T
B	410	250	240	230	23	2T & 3T
C	410	250	240	230	23	2T

*2T-<=25mm

*3T ->25mm



Certificate of Registration

(Quality Management System)

KVQA CERTIFICATION SERVICES PVT. LTD.

This is to certify that the Quality Management System of

SHREE AMBICA ALLOYS

Sirhind Side, R G Mill Road, G. T. Road, Mandi Gobindgarh,
Distt. Fatehgarh Sahib, Punjab 147301, INDIA

Has been found to be of the Quality Management System Standard

ISO 9001:2015

This certificate is valid for the following product or service range

**MANUFACTURER & EXPORTER OF ANGLE, CHANNEL, FLAT,
BAR, ROUNDS, SQUARES, BEAM, STRUCTURAL STEEL FOR
VARIOUS INDUSTRIAL APPLICATIONS OF AUTO PARTS,
RAILWAYS, CONSTRUCTION & STRUCTURES.**

1st Surveillance Due On: 02/07/2024: Done On:
2nd Surveillance Due On: 02/07/2025: Done On:

Certificate No: **KDACQ202308006**

Date Of Issue: 02, August, 2023

Valid Until: 01, August, 2026*

Issued by

Authorised signatory KVQA



eiāci
مركز الإمارات العالمي للاعتماد
Emirates International Accreditation Centre
CB-QMS-045

To Check the Status of the Certification kindly log on to www.kvqa.in
F-300, Sector - 63, Noida U.P. India. Ph- 011 -22711940, 22711941
Email : delhi@kvqaindia.com

*Subject to successful completion of surveillance audits



भारतीय मानक ब्यूरो
उपभोक्ता मामले, खाद्य एवं सार्वजनिक वितरण मंत्रालय
भारत सरकार
BUREAU OF INDIAN STANDARDS
Ministry of Consumer Affairs, Food & Public Distribution
Government of India
पी आर शाखा कार्यालय, (एन आर ओ बिल्डिंग)
PR Branch Office, (NRO Building)
प्लॉट नं. 4-ए, सेक्टर 27-बी, मध्य मार्ग, चण्डीगढ़-160019
Plot No. 4-A, Sector 27-B, Madhya Marg, Chandigarh-160019
Telephone : 0172-2997492, Email : nro@bis.gov.in / website : www.bis.gov.in

Attachment to Licence No. CM/L- 9621380

CM/L-	Name of the Licensee with the Factory Address	Name of the Product	Indian Standard No
9621380	Firm Name:- Shree Ambica Alloys Factory Address:- R.G.Mill Road, Sirhind Side Factory City:- Mandigobindgarh Factory District:- FATEHGARH SAHIB Factory State:- PUNJAB Factory Pincode:- 147301	Hot Rolled Medium and High Tensile Structural Steel	IS 2062:2011

Endorsement No. 19 Dated 19/02/2025

The following change in the scope of licence has been approved by the Bureau with effect from 2025/02/19 The license number allotted to you has been changed to 0009621380.

Other conditions of the licence remain the same.

Subash Chandra Naik
SCIENTIST-E & HEAD

मुख्यालय : मानक भवन 9, बहादुरशाह जफर मार्ग, नई दिल्ली-110002
दूरभाष : +91 11 23230131, 23233375, 23239402
ई-मेल : info@bis.gov.in वेबसाइट : www.bis.gov.in

Headquarter : Manak Bhawan 9, Bhadur Shah Jafar Marg, New Delhi-110002
Tele : +91-11-23230131, 23233375, 23239402
Email : info@bis.gov.in website : www.bis.gov.in

For detailed information on BIS, please consult the e-BIS Portal (www.manakonline.in)
Please use BIS CARE APP for verification of ISI-marked goods and hallmarked gold jewellery

BUREAU OF INDIAN STANDARDS

Attachment to Licence No. CM/L- 0009621380

CML-No	Name of the Licensee with the Factory Address	Name of the Product	Indian Standard No.
0009621380	Shree Ambica Alloys -R.G.Mill Road, Sirhind Side . . Mandigobindgarh : 147301	Hot Rolled Medium and High Tensile Structural Steel	IS 2062 : 2011

Endorsement No. 19 Dated 30-Sep-2025

Whereas, the licence was valid upto First October Two Thousand Twenty Five.

Now, consequent upon renewal, the validity of the licence given in schedule of the Licence Dated 30-SEP-2025 has been extended from First October Two Thousand Twenty Five to Thirty September Two Thousand Twenty Six

Other terms and conditions of licence remain same.

Branch Head (Parwanoo Branch Office)



Connect with us:

Shree Ambica Alloys, RG Mill Road, Sirhind Side, Mandi

Gobindgarh, Punjab 147301

Ph. +91 9815689595, 01765 511095, 01765 515915

Email: sales@sgmart.co.in

Website : sgmart.co.in | www.aplapollosgmt.com